

DVDO TPG

Test Pattern Generator

CalMAN Setup Guide

The DVDO Test Pattern Generator can be automatically controlled by CalMAN Display Calibration Software for flat panel and projection display measurement and calibration.

Required CalMAN version:

- 5.2.3, or newer

Recommended CalMAN Workflows:

- All available measurement and calibration workflows.

Required DVDO TPG Firmware:

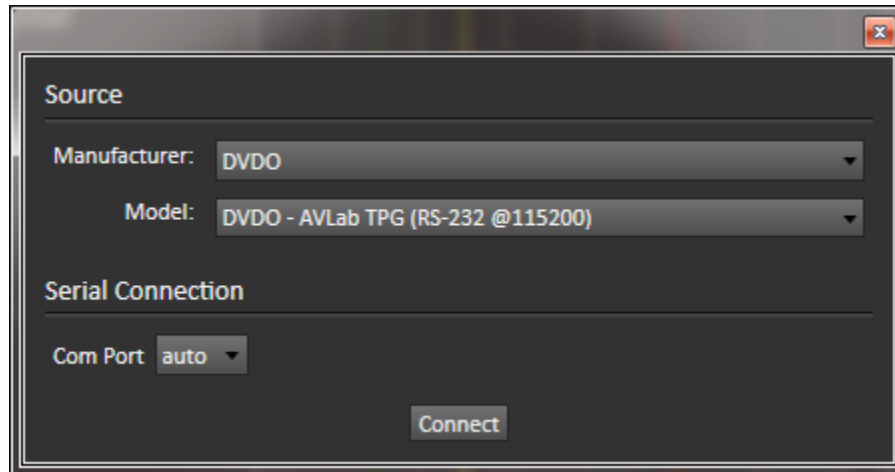
- CP9612RS1_20140307.sii or newer

DVDO TPG Control Connection:

- USB (micro USB connector)
- USB driver is on the included USB flash drive

CalMAN Connection Procedure

1. Connect the DVDO TPG directly to a host computer with a USB micro to USB standard A connector.
2. On the CalMAN Source Settings tab, click “Find Source,” then select “DVDO – AVLab TPG (RS-232 @115200).”



3. Click *Connect* on the Source connect dialog.

CalMAN Source Settings Tab

A Window Size selection on the Source Settings Tab allows you to select the type of test pattern provided for color meter measurements, as controlled by CalMAN software. The following Window Size selections are available for the DVDO TPG:

- Window 2%
- Window 5%
- Window 10%
- Window 18% (default)
- Window 25%
- Window 50%
- Full 100%

(NOTE: For Plasma and CRT displays, use the smallest window size that fills the measurement area of your color meter.)

Appendix A – DVDO TPG Test Patterns

The DVDO test pattern generator provides full field or window pattern, as requested by CalMAN for display measurement and calibration.

The DVDO TPG also provides specialty test patterns for visual display performance testing or for optimizing the adjustment of display Picture controls (contrast, brightness, etc.). When CalMAN is connected to the DVDO TPG, these patterns are available from CalMAN's specialty pattern icon.

Following is a list of the DVDO TPG specialty test patterns:

Brightness	Vertical Lines
Contrast	Horizontal Lines
Gradient Grayscale	Judder
Full White	Colorbars 75%
Full Black	Colorbars 100%
Color	Gray Ramp
Tint	Coarse Cross Hatch
ANSI Checkerboard	Fine Cross Hatch
Sharpness	Focus
Color Bars	Half Black / White
Frame / Geometry	Half 7 Colorbars 75%
Brightness / Contrast	Half 7 Colorbars 100%
ISF Brightness	Half 8 Colorbars 75%
ISF Contrast	Half 8 Colorbars 100%
Checkerboard	