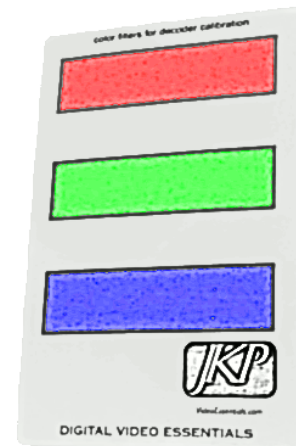
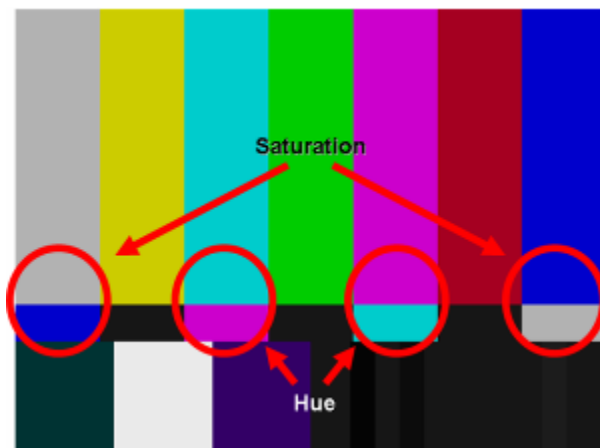


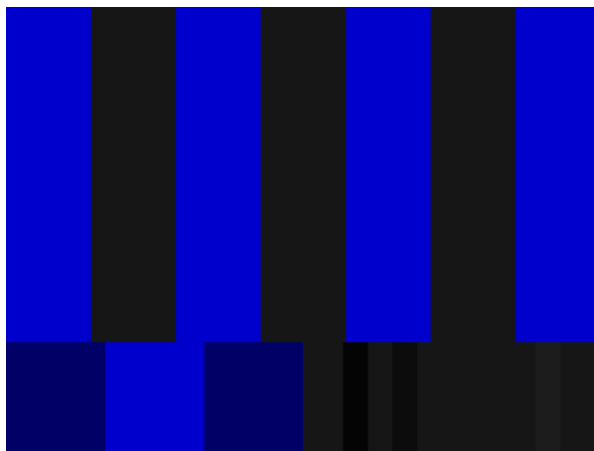
## JKP Filter Set

### Setting Color and Tint

Using the color bar pattern while looking through the blue filter, adjust the Hue or Tint control until the White, Cyan, Magenta and Blue bars on top start to merge with the smaller bars underneath them (all of the colors that have some blue component in them).



*Focus on the Blue/White sections when adjusting Saturation.*



#### **Limitations of this Approach**

Setting the color decoder controls visually is, without a doubt, the fastest method of doing this, and usually the most accurate. However, if your TV's primaries are particularly inaccurate or you have a filter that is "off" (filters degrade over time with exposure to humidity), then you may not get a satisfactory result. Some displays have a blue-only mode, this is a more precise way to set color and tint visually.