

CaIMAN **Setup Guide**

Panasonic CR, CX, CZ Series

2015 Models

Rev. 1.1

Introduction

For the Panasonic models listed above, CalMAN automatically calibrates the display's two point grayscale controls, the 10 point grayscale controls, and the CMS color gamut controls.

Also, the display's two custom picture modes, Professional 1 (ISF Day) and Professional 2 (ISF Night), can each be calibrated with individual picture menu adjustments, grayscale adjustments, and CMS adjustments.

CalMAN Recommended Version

- Version 5.5.2 or newer.

CalMAN Recommended Workflows

- HT Advanced, SI Advanced, or ISF Calibration workflow to optimize Picture controls and calibrate two point and 10 point grayscale RGB balance controls and CMS color gamut controls.

Panasonic Required Firmware

- All firmware versions supported

Panasonic Control Port

- Wireless or wired network connection

Panasonic Connection to Computer

To connect the Panasonic display to the calibration computer, through Ethernet:

1. On the Panasonic display, under *Network/Network Status*, note the *Network Name* to which the display is connected and note the display's *IP Address*.
2. Connect the CalMAN computer to the same network to which the display is connected.
3. On the Panasonic display, open the *Picture* menu.
 - a. Under *Picture/Picture Mode*, select Professional 1 or Professional 2.
 - b. Under *Picture/Lock Settings*, select *PIN*.

- c. Enter “i085” (the ‘i’ button is just below the Power button on the remote).
- d. Under *Adjustment Lock*, select *Off*.
- e. Arrow down to *isfcc Network* and press *OK* on the remote.
- f. At this point, the display will read “Waiting for Connection.”

CalMAN Connection to Panasonic

1. In CalMAN, under “Find Display,” select “Panasonic – 2015 CR, CX, CZ (Ethernet).”
 - a. Under *IP Address*, enter the IP Address you previously recorded.
 - b. Click *Connect* on the display connect panel.

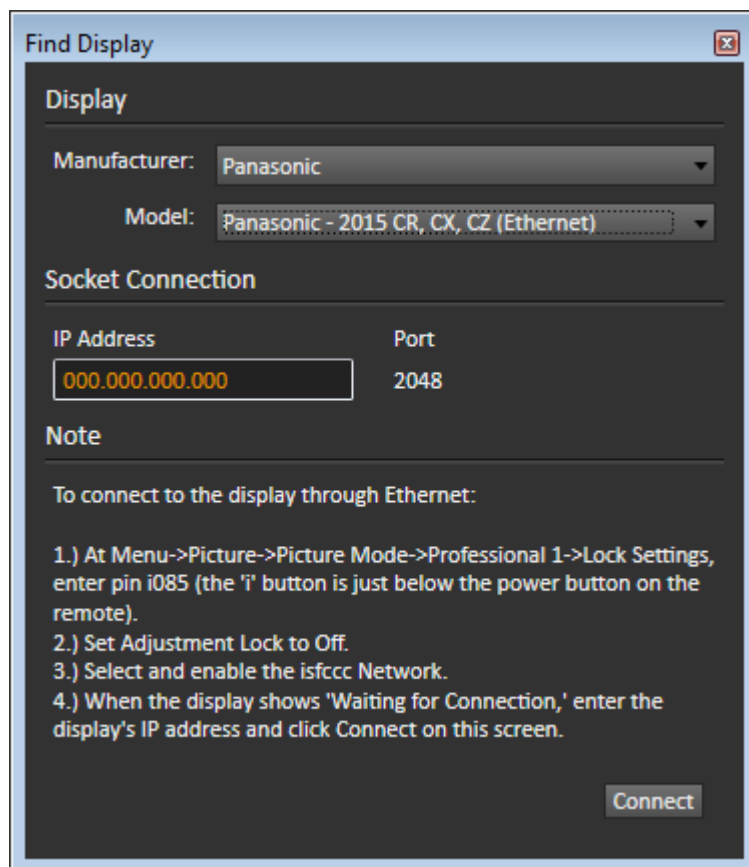


Figure X.

2. In CalMAN, on the *Display Control* panel, under *Display Mode Selection*, select “Pro 1 - ISF Day” or “Pro 2 - ISF Night.”

Meter Mode (Target Display Type)

CR and CX series - The Panasonic CR and CX series displays have a wide color gamut GB-r LED backlight. Select the 'LCD (LED Blue Green DCI/P3 Gamut)' Meter Mode for the CR and CX series.

Panasonic DDC Picture Controls:

Panasonic Picture controls are available within the CalMAN software, allowing you to make display adjustments in the software, rather than using the display's remote control. On those calibration workflow steps where you need to make a manual display adjustment (e.g. Brightness, Contrast, etc.), you can click the Open DDC Window button on the CalMAN Display Control tab, then select Display Control to make those adjustments from the CalMAN screen.

CalMAN AutoCal™:

To calibrate grayscale tracking and CMS on these displays, it is best to perform AutoCal on each of these three CalMAN workflow steps, in this order:

1. Grayscale – 2pt
2. Grayscale/Gamma
3. CMS Calibration

After AutoCal is complete, optimize the display's Brightness control for the local viewing conditions.

CalMAN Disconnect Procedure

To disconnect CalMAN from the Panasonic display:

- On the CalMAN Display Control tab, click *Disconnect*.

About / Contact

About Portrait Displays

Portrait Displays, Inc., since 1993, is a leading application software provider (ASP) for PC, smartphone, and tablet displays. The Portrait Displays team now includes **SpectraCal**, the world's leading provider of video display calibration software. The combined companies offer value-added, feature-rich solutions to both OEM display manufacturers and end users seeking improved accuracy and manageability of their displays.

Portrait Displays, an Intel Capital Portfolio company, is a private corporation with headquarters in Pleasanton, California, USA with representatives in Europe, Taiwan, China, Japan, and Korea.

Contact Us

SpectraCal

Submit a Technical Support Request:

<http://calman.spectracal.com/techsupport.html>

spectracal.com

sales@spectracal.com

+1-925-227-2700

**PORTRAIT
DISPLAYS**

Portrait Displays, Inc.

6663 Owens Drive

Pleasanton, CA 94588 USA

portrait.com