

CalMAN Setup Guide

Sencore Video Generators

VP401/403 Series, MP500, S802BT

Rev. 1.1

Introduction

The Sencore Video Generator test patterns can be automatically controlled by CalMAN Display Calibration Software. The generators provide test patterns for visual performance evaluation, grayscale luminance ramp calibration, color gamut (CMS) calibration, and validation measurements of white, primary, and secondary luminance ramps.

These generators do not provide RGB triplet support. Thus, these generators cannot provide test patterns for saturation sweeps, ColorChecker patterns, or 3D LUT calibration.

CalMAN Required Version

- CalMAN version 5.6.0 or later

CalMAN Recommended Workflows

- All available measurement and calibration workflows

Sencore Generator Required Firmware

- All firmware versions are acceptable

Sencore Generator Control Port

- Serial (VP40x series)
- USB (MP500)

Sencore Generator Connection to Computer

1. Connect the Sencore generator to the computer with a USB cable.
2. Be sure that the proper device driver is installed. If necessary, run the SpectraCal Device Driver Pack from this link:
<http://www.spectracal.com/download.php?id=3>

CalMAN Connection to Sencore Generator

1. On the CalMAN *Source Settings* tab, click “Find Source.”
2. On the *Find Source* dialog (below), select “Sencore” as the Manufacturer.

3. Select the *Model* to match your Sencore generator. When using a USB to Serial adapter, select the manufacturer of the adapter, usually FTDI or Prolific.
4. Select the Com Port assigned to the connected generator (check this in Device Manager).

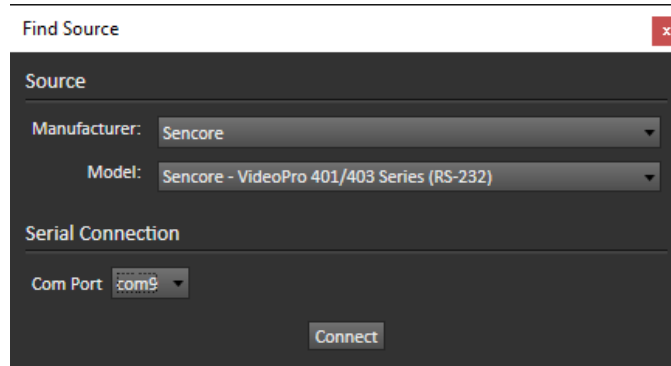


Figure 1. CalMAN Find Source dialog, for connecting a test pattern source to CalMAN

5. Click *Connect* on the *Find Source* dialog.

CalMAN Source Settings Tab

The CalMAN Source Settings tab provides Source Information and Settings for the connected Sencore Video Generator.

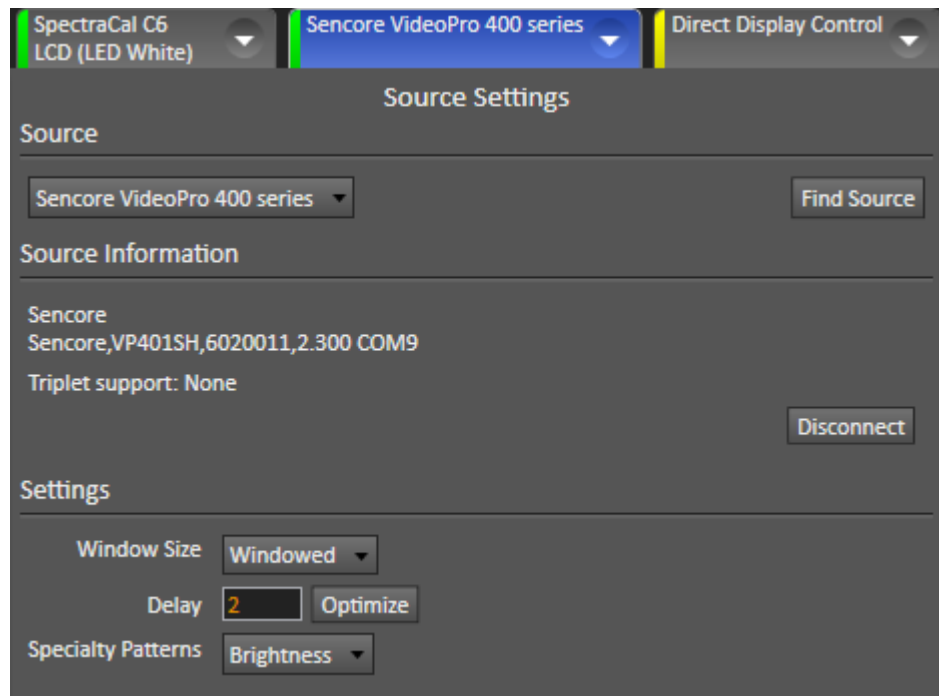


Figure 2. CalMAN Source Settings tab, for selecting test pattern options.

Settings

Window Size

Select the desired test pattern size and type from the Window Size selection box.

(Note: For plasma and CRT displays, *Constant APL 50* works well.)

Delay

CalMAN provides a default measurement delay time of 2 seconds to accommodate the test pattern settling time of the Sencore generator and an attached display. To optimize the delay time for a particular configuration, potentially speeding up all measurement times, click the Optimize button.

Specialty Patterns

The pattern selection field allows you to select patterns from the Sencore generator for visual display evaluation (not for electronic measurement).

About / Contact

About Portrait Displays

Portrait Displays, Inc., since 1993, is a leading application software provider (ASP) for PC, smartphone, and tablet displays. The Portrait Displays team now includes **SpectraCal**, the world's leading provider of video display calibration software. The combined companies offer value-added, feature-rich solutions to both OEM display manufacturers and end users seeking improved accuracy and manageability of their displays.

Portrait Displays, an Intel Capital Portfolio company, is a private corporation with headquarters in Pleasanton, California, USA with representatives in Europe, Taiwan, China, Japan, and Korea.

Contact Us

SpectraCal

Submit a Technical Support Request:

<http://calman.spectracal.com/techsupport.html>

spectracal.com

sales@spectracal.com

+1-925-227-2700

**PORTRAIT
DISPLAYS**

Portrait Displays, Inc.

6663 Owens Drive

Pleasanton, CA 94588 USA

portrait.com