

Custom Presets

Calibration adjustment for up to four different source and viewing conditions, with four gamma curves, three white balance standards, and three color gamut memories.

Pure Signal Pass-through

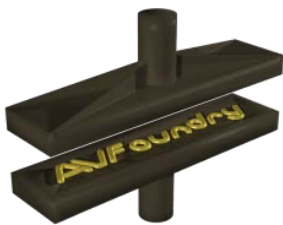
Transparent input/output pass-thru of RGB, 4:4:4, and 4:2:2 color space signals with HDCP-compliant and transparent HDMI repeater design.

Direct IR Control

Simple universal remote control or automated system integration with optical IR receiver and electrical 1/8" IR jack.

Accurate Color

Industry-proven color correction technology gives video processor color accuracy, without the processor complexity, size, or cost.

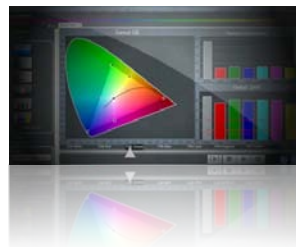


VideoEq Pro | Advanced Video Color Processor



- **Powerful independent 6-axis color control**
- **Complete 10-bit processing for gamma & white balance**
- **Simple to use HDMI in, HDMI out**
- **Easy USB calibration interface for calibration with CalMAN V4**

The VideoEq Pro solves the color correction calibration interface problem with state-of-the-art electronics and color science, and leaves the calibration interface to the industry-leading CalMAN calibration software. The CalMAN Version 4 software takes a series of performance measurements, calculates and programs the optimal VideoEq Pro calibration adjustments, then re-measures to verify optimum display performance. This automated calibration system expands, simplifies and standardizes any display or projector's color calibration capability.



CalMAN V4 automated adjustment support, custom PC software adjustment application, command line LUT interface, and USB calibration interface.



The VideoEq Pro features a 6-Axis CMS system that can accurately match a display's color primary colors to a standard system such as Rec 709 or Rec 601.



10-Bit RGB Color LUT with 1,024 points. Can accurately reproduce any target gamma value.

What Color is the lime supposed to be?

This is a fun demonstration of the amazing power that the VideoEq Pro gives you over video color. What you see below is a reference image being displayed on a consumer plasma. Reference content is fed from a test DVD, through the VideoEq Pro, and then to the display. The VideoEq Pro can completely adjust each individual primary and secondary color in all three directions in color space. With the VideoEQ Pro, you can literally change the color of the fruit by merely changing the color space values.

Blue lime?



Red lime?



Normal lime.



Orange Lime?



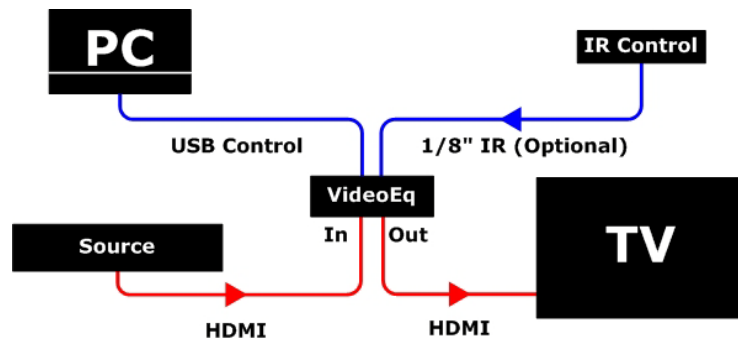
(Please note: These pictures have not been enhanced or modified. Each is an untouched picture of a static image on a Plasma Display.)



Back View

The VideoEq Pro solves this problem with state-of-the-art electronics and color science, and leaves the calibration interface to the industry-leading CalMAN calibration software. The CalMAN Version 4 software takes a series of performance measurements, calculates and programs the optimal VideoEq Pro calibration adjustments, then re-measures to verify optimum display performance. This automated calibration system expands, simplifies and standardizes any display or projector's color calibration capability.

Connection Diagram



Specifications

- HDMI Input (1): 1.3a compliant
- HDMI Output (1): 1.3a compliant
- Gamma LUTs (4): 10-bit, 1024 levels
- Grayscale RGB LUTs (3): 10-bit, 1024 levels
- Color Gamut (3): 12-bit, 4096 levels
- Control Interfaces: USB 2.0, Optical IR, Electrical 1/8" IR
- Power: 5 V @ 1 A
- Dimensions: 1.125" x 4.25" x 3.375" (HxWxD)

What's Included

- VideoEq Pro Processor
- VideoEq Pro Software
- 0.5 Meter HDMI Cable
- 5V Power Supply
- Quick Start Guide
- USB Cable